

## Solid Edge CAD Integration for Windchill PDMLink 8.0

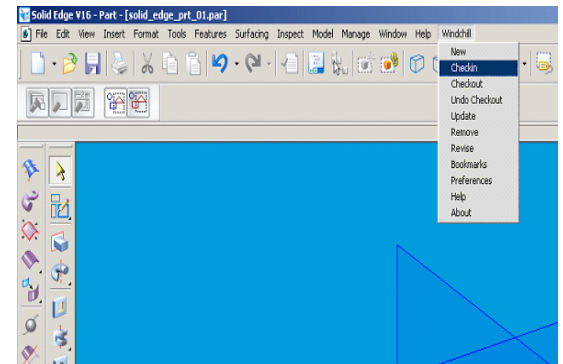
Solid Edge CAD Integration (CADi) for PDMLink enables engineers to create CAD documents and drawings in Solid Edge and manage these files in PDMLink without leaving the Solid Edge interface. The Solid Edge CADi captures essential part data such as metadata and relationships between parts, manufacturing, and historical data from Solid Edge model files to track and control the evolution of the part through the product lifecycle.

### Key Customer Benefits:

- Access PDMLink from within Solid Edge.
- Maintain data integrity through bidirectional transfer of data.
- Enhance sharing design data within enterprise portal.
- Familiar 3rd Party WGM user interface decreases training time.

### Features:

- Provides enterprise visibility for Solid Edge design files, relationships, attributes, and derivative data.
- Enables PDMLink to drive design process, changes, and configuration.
- Provides support for bottom-up or top-down design process.
- Provides enterprise management of design data repositories.
- Allows users to search for existing design data in PDMLink and reuse existing designs from within the Solid Edge integration application.
- Extracts and maintains BOM information from the Solid Edge system.
- Creates associations between primary and secondary design data with a product structure or part.
- Manages and fully integrates the CAD system data to Enterprise Problem Reports (PR), Change Request (ECR), and Change Notices (ECN) upon the first check-in to PDMLink.
- Allows mapping Solid Edge properties to specific PDMLink attributes.
- Tracks and controls the evolution of the part by referencing the part number, part code number, revision number, part name and title.
- Provides support for families of parts. Solid Edge CADi manages each instance as a unique item within PDMLink.



Windchill menu added to Solid Edge UI

### Versions Supported:

- Solid Edge V19

### System Requirements:

- Windows® 2000™ SP4
- Windows® XP™ (Professional Edition only) SP1 and SP2
- Internet Explorer
- Windchill PDMLink 8.0

**For more information, visit:**  
[www.i-cubed.com](http://www.i-cubed.com)