

Solution Brief

Benefits of using Legend for PDMLink

- Unlocks the full power of PDMLink by allowing a robust set of attributes to describe your parts.
- Easily and securely transfers all the vital metadata and structure data in your product documents.
- Provides PDMLink users with a complete view of your product information.

More on www.i-cubed.com

I-Cubed and Legend are trademarks of Integrated Industrial Information, Inc. All other brand names, product names, or trademarks belong to their respective holders. Copyright © 2006 I-Cubed. All rights reserved.

Migrating from Teamcenter® to PDMLink

Save time, money, eliminate mistakes. Manage the migration of your engineering assets with I-Cubed's data loading technology, Legend for PDMLink, for migrating from Teamcenter® to Windchill PDMLink.

In today's business environment PLM systems help companies satisfy a number of competitive requirements such as reducing product development cost, improving product innovation, and shorten time-to-market. If your company requires migrating vital engineering data from the Teamcenter® to Windchill PDMLink, there are a number of risks to avoid when implementing migration such as potential data loss and downtime to name a few.

I-Cubed and its family of Legend products and services, teamed with PTC and its Windchill suite of applications, allows you to avoid the risks associated with the data migration and maximize the rate of return on your PLM investment. Legend for PDMLink enables your company to leverage the intellectual capital that already exists within your organization and publish that information into one unified system, Windchill PDMLink.

The Legend process takes metadata and files exported from Teamcenter®, migrates that information into PDMLink, and enhances its richness allowing easy data sharing through PDMLink. With Legend you can easily load data from Teamcenter® providing PDMLink users with a complete view of your product information.

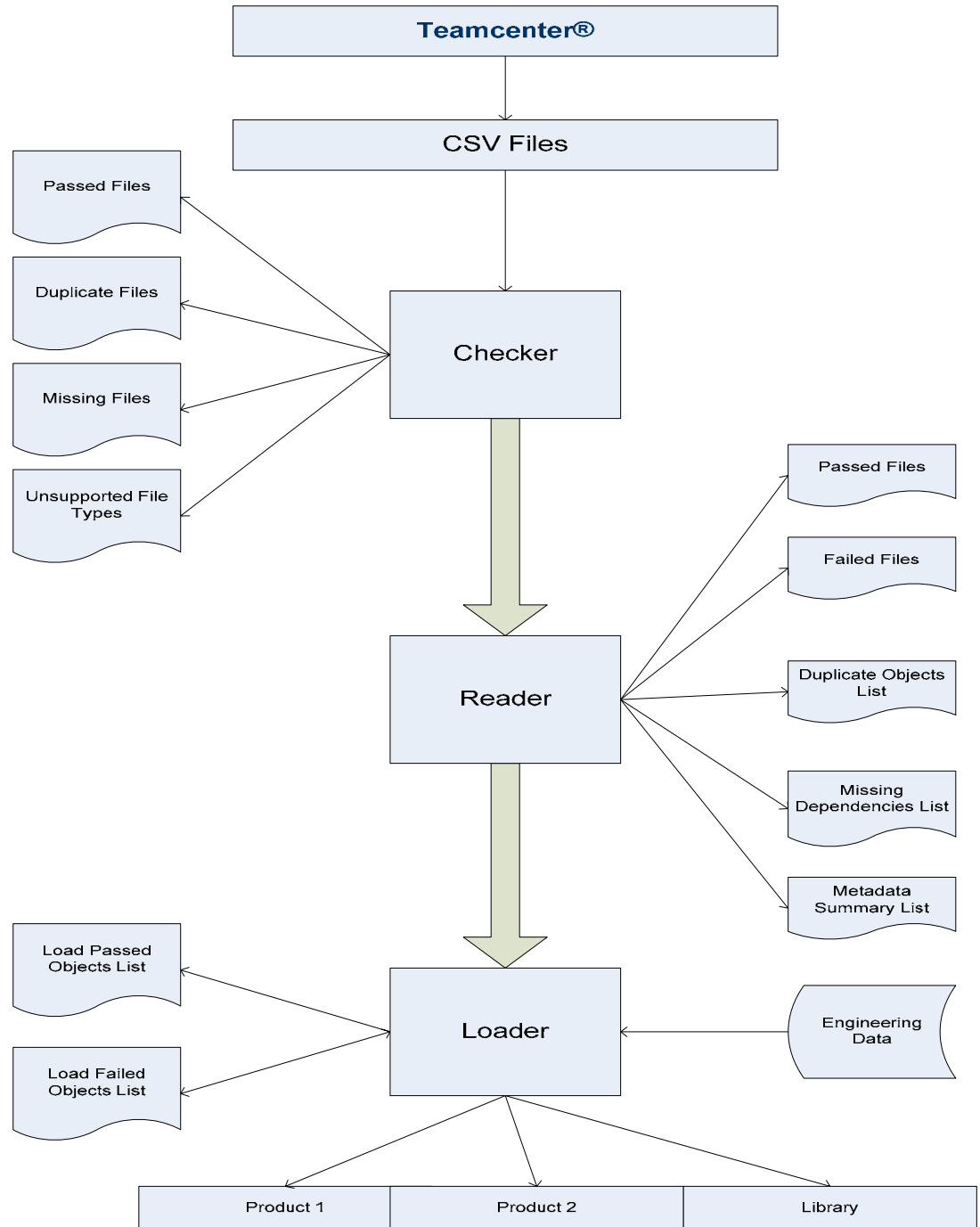
Migrating your legacy data from Teamcenter® to PDMLink with Legend includes several important steps:

Step 1. Exporting your Teamcenter® metadata via SQL into industry standard .CSV (comma-delimited files).

Step 2. Reading and Reporting.
Legend's reporting capabilities enable you to easily identify duplicates and missing dependencies along with verifying family table instances. This process allows you to review your metadata and make modifications or even add more information if needed.

Step 3. Loading.
Legend uses the .CSV file as input to load your files and associated metadata into PDMLink. This capability allows you to organize your data and plan a migration strategy while reducing the amount of downtime for users when files are not available.

Legend Process



By migrating metadata from Teamcenter® to Windchill PDMLink using Legend for PDMLink, I-Cubed allows you to unleash the energy of your engineering data to the structuring capabilities of Windchill.