

OneSpace Drafting (ME 10) CAD Integration for Windchill

Unlock the power of Windchill PDMLink with an I-Cubed CAD Integration for OneSpace Drafting (ME10)

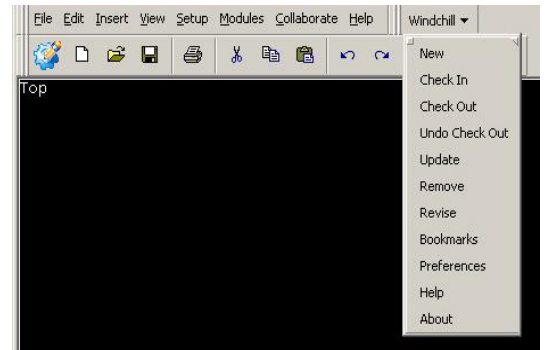
OneSpace Drafting CAD integration for Windchill enables engineers to manage and create CAD documents and drawings in OneSpace Drafting and store these files in Windchill PDMLink without leaving the OneSpace Drafting interface. OneSpace Drafting CAD integration captures essential part data, manufacturing and historical data from OneSpace Drafting model file to track and control the evolution of the part through the product lifecycle.

Key Customer Benefits:

- Improve standard design process.
- Save time on searching for existing design data due to enhanced search capability.
- Access Windchill PDMLink from within OneSpace Drafting.
- Improve operating efficiency through design re-use in the design process steps.
- Maintain data integrity through bi-directional transfer of data.

Product Features:

- Creates enterprise visibility for the OneSpace Drafting metadata (infotexts and title block info) and design source data.
- Creates enterprise visibility for attribute, metadata, and Bill of Material (BOM) information.
- Enables Windchill PDMLink to drive design process, changes, and configuration.
- Provides support for bottom-up or top-down design process.
- Provides enterprise management of design data repositories.
- Extracts and maintains BOM information from the Drafting system.
- Manages and fully integrates the CAD system data to Enterprise Problem Reports (PR), Change Request (ECR), and Change Notices (ECN) upon the first check-in to Windchill PDMLink.



Versions Supported:

- OneSpace Drafting 13.20
- Other versions may be supported upon request.

System Requirements:

- Windows® 2000™ SP4
- Windows® XP™ (Professional Edition only) SP1 and SP2
- Internet Explorer
- Windchill 8.0

For more information, visit:
www.i-cubed.com